

South Brunswick Arts Commission

November • December 2014

New Jersey's Many Cultures at The Gallery through January

The new exhibit at The Gallery features works by twenty area artists: Stephanie Barbetti (Kendall Park), Janis Blayne Paul (Hopewell), Sue Chiu (Lawrenceville), Stephen Cohen (Hightstown), Lakshmi Durga (Monmouth Junction), Gerry Feldman (East Brunswick), Carl Frankel (Monroe Twp.), Rhonda Goodwin (Monmouth Junction), Catherine Kurtz Gowen (Princeton), Carole Grand (East Brunswick), Barbara Hochberg (Monmouth Junction), Vadim Levin (East Windsor), Smita Nedunuri (Kendall Park), Elizabeth Peck (West Windsor), Rosalind Orland (Monroe Twp.), Andrea Orlando (Monmouth Junction), Nancy Scott (Lawrenceville), Jerry Spielman (West Windsor), Joan Wheeler (Shamong) and Valerie Williams (Ewing).

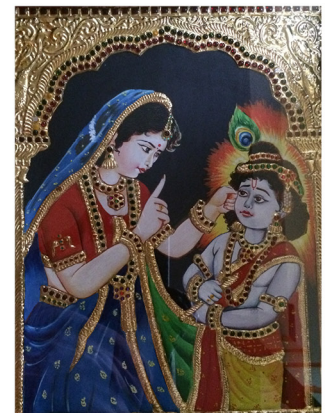
The juror for this show was Joan Arbeiter of Metuchen, painter, teacher of art and art history and author. She studied at Douglass College and received her MFA from Pratt Institute. She taught for over 30 years at the duCret School of Art & Design.



Rhonda Goodwin
Ghana Beauty



Janis Blayne Paul
Om Ganesh



Lakshmi Durga
Mother and Son

Juror Joan Arbeiter writes about the exhibit:

This exhibition is a celebration, featuring local artists, devoted to American religious beliefs and ethnic traditions including Hindu, Judaic, Christian, Japanese, West African and Native American. These themes influence the artists' subject, meaning and choice of media and technique.

Lakshmi Durga's *Mother and Son* illustrates the story of the naughty young god, Shiva, being admonished. It is painted in tempera on wood in the traditional South Indian Tanjore style, including gold foil and semi-precious stones. Janis Blayne Paul represents the dancing elephant-headed god, Ganesh, in two distinct stone carvings; one illustrates his dance with realistic detail and the other seems totally abstract but clearly expresses the flowing movement. Smita

continued on back page

Juried Exhibit *Still Life* to begin January 13, 2015

Application Deadline December 10, 2014

Download application from www.sbarts.org/the-gallery



The Gallery, South Brunswick Municipal Building, 540 Route 533, Monmouth Junction

Open weekdays, 8:30--4:30pm, and evenings when meetings are scheduled.

Visit www.sbarts.org, email arts@sbtnj.net or leave message at 732.329.4000 x 7635.



South Brunswick Arts Commission

presents

The Jazz Café

For more jazz throughout the state, www.NJJazzList.com.

Herb Eckert Auditorium, Senior Center

South Brunswick Municipal Complex

540 Route 522 • Monmouth Junction

Admission \$6 as the door

No advance ticket sales

Doors open 7:30pm, all ages welcome

First Set
Guitarist
Matt Wong

Friday, November 7, 2014 8 to 10PM

Double Bill

Second Set
Guitarist and vocalist
Carol Hamersma
& Violinist and
vocalist **Diane Perry**



Matt Wong

Matt Wong, from West Windsor, New Jersey is far from ordinary. Only 17 years old, the teenager is on his way to becoming one of the finest in today's guitar scene. He has toured the tri-state area, released two solo albums, and was nominated for Top 18 & Under Instrumentalist in the 2013 Jersey Acoustic Music Awards.

Matt picked up the guitar at age six and has been playing ever since. He currently focuses on playing what he calls, "fingerstyle,"

which allows him to hold down the melody, rhythm, and bass parts simultaneously, while adding a little percussion.

As a touring artist, Matt performs throughout the tri-state area, and Pennsylvania. Wong has been invited to perform at notable events including Communiiversity in Princeton, NJ, and Art All Night in Trenton, NJ, and has played concerts at venues such as the Blue Note Jazz Club in New York City, the Legendary Dobbs in Philadelphia, The Saint in Asbury Park, NJ, and the Record Collector Store in Bordentown, NJ. Matt has shared the stage with GRAMMY award winning guitarist Earl Klugh, Canadian fingerstyle guitarist Bryan Rason, and singer/songwriters Sarah Donner, and Avi Wisnia.



Carol Hamersma

Carol Hamersma is a versatile multifaceted artist, well versed in classical, jazz, and pop. As both guitarist and vocalist, she has performed extensively in the metropolitan area leading her own combos. She has been heard at major hotels in Atlantic City, Las Vegas, and Philadelphia, appearing for such dignitaries as Governors Florio and Whitman, Mayor

David Dinkins and Donald Trump. She has appeared at the Barron Art Center Series Women in Jazz and Four Guitars and is a regular performer at Trumpets jazz club in Montclair. Classical performances have included the Montclair Art Museum and the Bruno Walter Auditorium at Lincoln Center. As a member of the Metropolitan guitar trio, she appeared on the Saturday Evening Concert Series sponsored by the Morristown Unitarian Fellowship. She has done several New Jersey Cable television spots including the Comcast 57 Steve Ames Show. She played with the female rock band She at CBGB's and at Cami Hall with Electix. She has played production shows at the Trump Plaza and backed Regis Philbin and Kathy Lee at Caesar's Palace. She also performed in the orchestra of Kean College's production of "Ragtime" doubling on guitar, banjo and mandolin.

SENIOR CENTER ARTS EVENTS

Open 8:30–4:30pm weekdays. For more information, call 732.329.4000 ext. 7670

November 6 • 12:30pm, Movie, *The Trip to Bountiful*.

November 14 • 12:30pm, Art lecture: *Impressionism*.

November 25 • 12:30pm, Movie, *Heaven Is For Real*
Activities

Art workshops with Gavin, Fridays at noon, free.

Drop-ins encouraged.

Structured instruction for beginner to advanced.

Future Jazz Cafes

No Performance in December due to auditorium scheduling conflicts

Spring Schedule

February 6 • The VooDUDES

March 6

April 10

May 1



Diane Perry

Performing the American Popular Songbook she fell in love with as a teen, and in the vein of Diana Krall's moody and intimate interpretations, **Diane Perry** delights audiences with new perspectives on old standards.

Classically trained at Juilliard, her violin playing combines the tone of the concert-hall virtuoso with the growl of

the blues and the weighty swing feel of the big bands. An alumnus of Vince Giordano's Nighthawks as well as symphony orchestras across the eastern seaboard, Diane Perry has performed with Travelin' Light, John Stubblefield, The DMP Big Band, Quartette Indigo, Jeff Tyzik, and Tom Harrell.

With her group, which can vary from a quintet down to a duo with a pianist, Diane Perry explores the darker emotional side of the oft performed standards, as well as lesser performed but still familiar tunes associated with some of her favorite singers, which include Fred Astaire, Frank Sinatra, Carmen McRae, Doris Day, Susannah McCorkle, Rebecca Kilgore, and Mel Torme'.

In The Gallery



Speed, photograph by Joan Wheeler



Birkat HaBayit, calligraphy in watercolor & ink by Stephen Cohen



Remembered, collage by Carole Grand

Local Galleries, Theater Performances,
Concerts and More

www.sbarts.org/other-info/area-events/

Classes, Workshops, Calls for
Artists and Performers

www.sbarts.org/other-info/opportunities/

Nedunuri also provides an elephant headed Lord Ganesha in mixed media.

Carl Frankel carefully renders in charcoal a small Bar Mitzvah boy reading from the Torah in the quiet and supportive presence of the Rabbi and elders. In contrast, *Jewish Wedding Fantasy*, a photograph by Gerry Feldman, is blurred making us feel as if we also are being jostled by the ecstatic crowd, as the bride and groom are lifted up on chairs to the joyful beat of the music.

In his photos Jerry Spielman shows us attractive views of the interior and exterior of two contemporary New Jersey houses of worship – a temple and a church. Elizabeth Peck offers a beautiful sketch of a church. Carole Grand pays a touching tribute to her immigrant grandparents in her mixed media collage, *Remembered*.

Barbara Hochberg shares six of her Jewish New Year watercolor greeting cards. Hebrew letter forms and words are inspiration for Vadim Levin's colorful, painterly, exuberant abstractions. And Stephen Cohen meticulously employs calligraphy to acquaint us with the Hebrew alphabet and two exquisite Judaic texts in ink, watercolor, gouache and gold leaf. Also using an exacting illumination technique in these same materials, Catherine Kurtz Gowen reproduced the letter "A" from the Gutenberg Bible, ca. 1455.

The inspiration of her Japanese, Taiwanese and American cultures come together in Sue Chiu's elegantly carved and raku fired clay products. Stephanie Barbetti shows dignity in sensitively rendered portraits of Native American

Lenape Indians. *Ghana Beauty* is presented by Rhonda Goodwin in a creatively cropped and stunning portrait of her West African friend wearing native dress and handmade jewelry.

Disability sports is very active in our state and Joan Wheeler's stop action photographs introduce us to three of New Jersey's disabled athletes competing in top form.

Nancy Scott's *The Inner City* collage juxtaposes vibrant graffiti against decaying landscape. An older Italian neighborhood with a stucco building is rendered by Rosalind Orland who mixes small pasta into the paint. The figs you would expect to find growing in this neighborhood are provided by artist Andrea Orlando.

Did you know that there are monumental sculptures by Seward Johnson temporarily on exhibit at the Grounds For Sculpture? Valerie Williams, in her close up photos, shows us the iconic Marilyn and the emerging giant in *Awakening*. Finally, don't miss the bucolic references to our Garden State with Jersey Rolls by Valerie Williams and NJ Shore by Elizabeth Peck.

CAMERA CLUB

If you are interested in helping to determine the future of the South Brunswick Camera Club, please contact Jim Pickell, dotjimp@aol.com, 732.821.6196



South Brunswick Arts Commission
Municipal Building, POB 190
Monmouth Junction, NJ 08852

Arts Commission Events Calendar

Jazz Cafe

November 7, 8PM • Double Bill
Matt Wong

Carol Hamersma & Diane Perry

Art Club

Public Works Bldg, 6:30 - 8:00pm
No Meeting in November
Wednesday, **December 17**

The Gallery

New Jersey's Many Cultures through **January 12, 2015**

Winter Exhibit: *Still Life*
application deadline **December 10**

Budget constraints have forced us to discontinue mailing this printed newsletter. It will continue to be available at the Municipal Building, Library, Recreation Department and Senior Center. To receive the electronic newsletter, send your request to arts@sbtmj.net.

South Brunswick Arts Commission Meetings are held the 3rd Thursday monthly, in the First Floor Lounge of the Municipal Building, 6:30pm. Next meetings: **September 18** and **October 16**. Public welcome.

To list your arts event on our website, please send your information by the 15th of the preceding month to arts@sbtmj.net.

Visit the South Brunswick Arts Commission website:

www.SBArts.org