

**South Brunswick Arts Commission**

**November • December 2016**

***Rhythm, Texture, Color at The Gallery through January 12, 2017***



*Goldfish with Wisteria,*  
watercolor,  
Joanne Yang

For this exhibit we asked for work that incorporated one or more of the elements of rhythm, texture and color in a significant way, whether through a realistic or an abstract image; for example, art effectively employing repetition and variation or the subtlety or passion of the palette or where the viewer wants to reach out and touch the richness of the surface. Juror Eva Mantell of Princeton selected 35 works representing 22 artists for display.

Exhibiting artists are Stephanie Barbetti (Kendall Park), Ed. Belding (Kendall Park), Robin Brown (Philadelphia), Richard Demler (Somerset), Toby Ehrlich (Dayton), Joseph Gilchrist (Hamilton), Barbara Hochberg (Monmouth Junction), Avelene Jacobs (Kendall Park), Mary Alessio Leck (Kendall Park), Vadim Levin (East Brunswick), Steven Levine (Kendall Park), Sadi Mizrahi (Kendall Park), Andrea Orlando (Monmouth Junction), Teresa Prashad (Lawrenceville), Louise Reeves (North Brunswick), John Sandstedt (Dayton), Krisopher Schoenleber (Princeton), Steven Schulman (Kendall Park), Nancy Scott (Lawrenceville), Shahina Siddiqi (Kendall Park), Ann Sisko (Somerset), Jerry Spielman (West Windsor), Jere Tannenbaum (Princeton), Joan Wheeler (Shamong), Valerie Williams (Ewing) and Joanne Yang (Kendall Park).



*Leaves Under Ice*  
photography, Ann Sisko



*Water Dance*  
silk dyes on silk, Teresa Prashad

**SBHS Student Invitational**  
January 20 to March 3, 2017  
  
Works by SBHS art students  
selected by their teachers.



Enlargeable version  
online at [www.sbarts.org](http://www.sbarts.org)  
and large print version  
available on request.

**The Gallery, South Brunswick Municipal Building,  
540 Route 533, Monmouth Junction**  
Open weekdays, 8:30--4:30pm, and evenings when meetings are scheduled.  
Visit [www.sbarts.org](http://www.sbarts.org), email [arts@sbtnj.net](mailto:arts@sbtnj.net) or leave  
message at 732.329.4000 x 7635.

**Grant funding has been provided by the  
Middlesex County Board of Chosen Freeholders  
Middlesex County Cultural & Heritage Commission  
and the New Jersey State Council on the Arts**





South Brunswick Arts Commission

presents

## The Jazz Café

For more jazz throughout the state, [www.NJJazzList.com](http://www.NJJazzList.com).

Herb Eckert Auditorium, Senior Center  
South Brunswick Municipal Complex  
540 Route 522 • Monmouth Junction  
Admission \$6 as the door  
No advance ticket sales  
Doors open 7:30pm, all ages welcome

**November 4, 2016, 8 to 10 PM • Joe & Rosie**



Rosemary Loar and Joseph Frame

Joe & Rosie have developed their own distinctive arrangements to perform songs from The Great American Song book, Brazilian Jazz standards, and originals.

Rosemary Loar and Joseph Frame are the musicians who comprise the duo of Joe & Rosie. Friends for many years (Rosemary introduced Joe to his wife!), they decided to begin working as a duo only recently. Their approach is to lay bare the essence of each song, revealing their unique insight into the composer's intentions.

For Rosemary Loar ([www.RosemaryLoar.com](http://www.RosemaryLoar.com)), this insight comes from an superlative career in music and the theatre. Rosemary's influences are eclectic. Her first five years in New York City were spent performing a critically acclaimed jazz cabaret act, where she wrote the arrangements and broke new ground in what was then, a very homogenous venue. She left cabaret to go the the bigger stages of Broadway but has since returned. She has sung at Birdland, The Iridium, The Metropolitan Room, The Laurie Beechman Theater, Don't Tell Mama, Town Hall (Cabaret Convention), Symphony Space, Upstairs at Sardi's, Hotel Pierre, in LA at the Gardenia and MBar, in Chicago at The Tambourine Room and every summer in Munich, Germany. She was awarded the Hanson Award for continued excellence in Cabaret in March 2012. As a concert performer she has appeared at: Carnegie Hall, (the day after she was married), 92nd Street "Y", at Town Hall in Garrison Keillor's Prairie Home Companion, with the North Carolina Symphony, the Orlando Symphony and with the Peter Duchin and Nelson Riddle Orchestras..

Guitarist Joseph Frame's ([www.Frameworkjazz.com](http://www.Frameworkjazz.com)) insight derives from his performances as a solo guitarist for many years at venues throughout the Tri-state. Also, his work, since the mid '90's, as leader of the quartet/trio Framework (with whom Rosemary has also performed). Joe studied with legendary acoustic jazz/classical guitarists Gene Bertoncini and Charlie Byrd, and performed to great acclaim at the Brazilian Consulate in Manhattan. His meticulously developed fingerstyle arrangements emphasize the harmonic content of each piece he performs in Joe & Rosie. Frame always concentrates on providing his audience with a meaningful, memorable, and moving musical experience.

Eschewing over-production, with just voice and guitar Joe & Rosie create vital, authentic music!

### Volunteers Needed

Two positions are vacant on the Arts Commission for resident members. We are particularly looking for a member willing to be secretary or publicity coordinator.

Volunteers are also need to help with setup and cleanup at the Jazz Cafe, with this print newsletter and the web site.

For more information, email [arts@sbtnj.net](mailto:arts@sbtnj.net),

Commission application form can be filled out online at [www.sbtnj.net](http://www.sbtnj.net) (choose Boards and Commissions from left column menu) or a paper application can be picked up at the South Brunswick Municipal Building.



South Brunswick Arts Commission

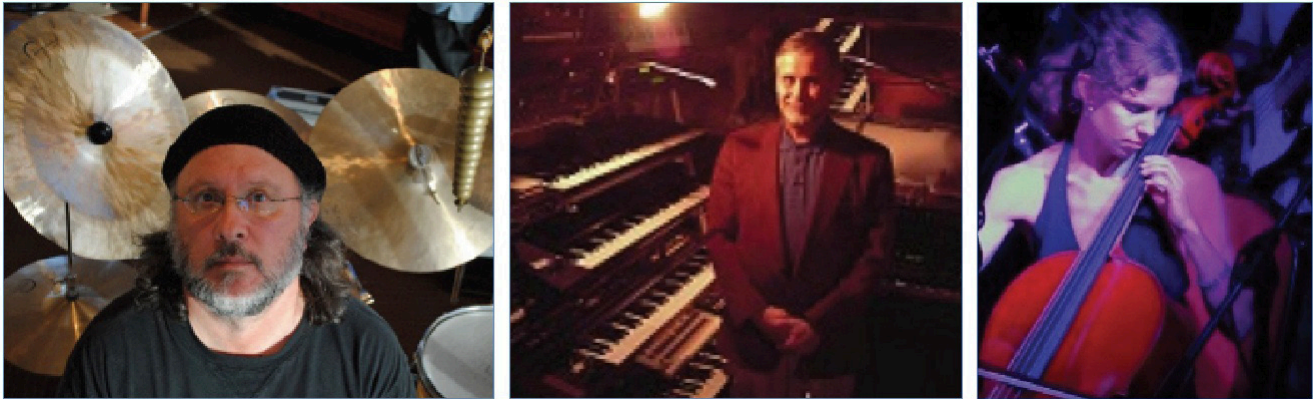
presents

## The Jazz Café

For more jazz throughout the state, [www.NJJazzList.com](http://www.NJJazzList.com).

Herb Eckert Auditorium, Senior Center  
South Brunswick Municipal Complex  
540 Route 522 • Monmouth Junction  
Admission \$6 as the door  
No advance ticket sales  
Doors open 7:30pm, all ages welcome

**December 9, 2016, 8 to 10 PM • Adelante**



J. Jody Janetta, Paul "Woz" Woznicki and Sheila Hershey

### Music Without Boundaries

**Fusing Jazz-World-Roots-Americana-Classical-Funk-Ambient-Electonica-Trance  
An Eclectic Musical Melange**

To experience the music of Adelante is to be taken on an aural journey that touches mind, body and spirit. The music of Adelante is rooted in the improvisational approaches of Modern Jazz, Classical Music and Pop Music. Adelante creates a musical brew that knows no musical boundaries...relishing in the challenge that all musical styles can be complimentary and weaved together to create something musically and sonically beautiful, new and unique.

The core of Adelante is drummer/percussionist J. Jody Janetta and keyboardist/synth player/composer Paul "Woz" Woznicki. Joining them for this performance is bass player Sheila Hershey.

Adelante continues on its musical journey of performing contemporary jazz-improvisational music of all types with a rotating cast of wonderful musicians.

### SENIOR CENTER ARTS EVENTS

Open 8:30–4:30pm weekdays. For more information,  
call 732.329.4000 ext. 7670

**November 3** • 12:30pm, Movie, *Now You See Me 2*

**November 18** • 12:30pm, Art lecture with Maurice Mahler on Edgar Degas

**November 21** • 12:30pm, Bollywood movie – TBA

**November 22** • 12:30pm, Movie, *Me Before You*

Activities

**Art with Christina** • Mondays @1:30pm, Nov. 28-Dec. 19, (4 weeks), \$15

## Also from *Rhythm, Texture, Color* at The Gallery



*Tulip, a Memory*  
photography  
Mary A. Leck



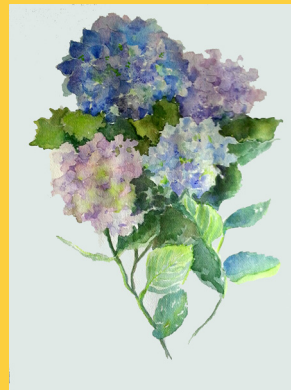
*The Blues*  
photography  
Robin Brown



*Pineapple*  
watercolor  
Andrea Orlando



*Pink Sherbet*  
mixed media  
Nancy Scott



*Hydreangeas*  
watercolor  
Barbara Hochberg



**South Brunswick Arts Commission**  
Municipal Building, POB 190  
Monmouth Junction, NJ 08852

## Arts Commission Events Calendar

### Jazz Cafe

**November 4 – Joe & Rosie**

**December 9 - Adelante**

*Spring schedule to be announced based on Senior Center Auditorium availability during renovations.*

### The Gallery

#### *Rhythm, Texture, Color*

October 17, 2016 through January 12, 2017

#### *SBHS Student Invitational*

January 20 to March 3, 2017

Works by SBHS art students selected by their teachers.

This newsletter is available at the Municipal Building, Library and Senior Center. Enlargeable PDF version is available at [www.sbarts.org/other-info/print-newsletter-archive/](http://www.sbarts.org/other-info/print-newsletter-archive/). To receive the monthly electronic newsletter, send your request to [arts@sbtnj.net](mailto:arts@sbtnj.net).

**South Brunswick Arts Commission** Meetings are held the 3rd Thursday monthly (second Thursday in December), in the First Floor Lounge of the Municipal Building, 6:30pm. Next meetings: **November 17** and **December 8**. To list your arts event on our website, please send your information by the 15th of the preceding month to [arts@sbtnj.net](mailto:arts@sbtnj.net).

The South Brunswick Arts Commission is committed to making its programs and facility accessible to everyone. If you have any questions about your visit please contact us at [arts@sbtnj.net](mailto:arts@sbtnj.net) or leave a message at 732-329-4000 x 7635.

Visit the South Brunswick Arts Commission website:

**[www.SBArts.org](http://www.SBArts.org)**

**CAMERA CLUB** - If you are interested in helping to determine the future of the South Brunswick Camera Club, please contact Jim Pickell, [dotjimp@aol.com](mailto:dotjimp@aol.com), 732.821.6196