

South Brunswick Arts Commission

September • October 2017

Geology, Meteorology, Astronomy at The Gallery to October 20, 2017



David Woods, *Shoreline at Seahouses*



Andrea Orlando, *Mesa Arch*



Lynn Cheng Varga, *Northern Lights*



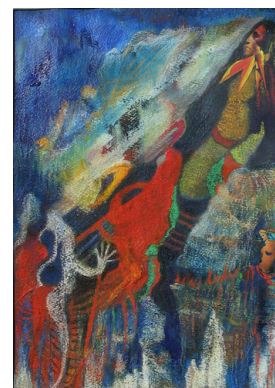
Mary Allessio Leck, *Jointed Rock*

This program is made possible in part by funds from the Middlesex County Board of Chosen Freeholders through a grant from the New Jersey State Council on the Arts.

MIDDLESEX
COUNTY • N J

Discover
**JERSEY
ARTS**

NEW JERSEY
STATE COUNCIL
ON THE ARTS



Stephanie Barbetti, *Celestial Beings*

**Reception for Home Economics
& Physical Education**
Friday, October 27, 6:30 - 8PM

The Gallery, South Brunswick Municipal Building, 540 Route 533, Monmouth Junction

Open weekdays, 8:30--4:30pm, and evenings when meetings are scheduled.

Visit www.sbart.org, email arts@sbtjn.net or leave message at 732.329.4000 x 7635.





South Brunswick Arts Commission

presents

The Jazz Café

For more jazz throughout the state, www.NJJazzList.com.

Herb Eckert Auditorium, Senior Center
South Brunswick Municipal Complex
540 Route 522 • Monmouth Junction
Admission \$6 as the door
No advance ticket sales
Doors open 7:30pm, all ages welcome

September 8, 2017, 8 to 10 PM • Shikantaza (BYOB)



Left to right, Bernhard Geiger, Brandon Lewin and Doug Miller

The word shikantaza refers to a form of Japanese Zen Buddhist meditation. It literally translates as just sitting. Shikantaza founders Douglas Miller and Brandon Lewin launched the Shikantaza Organic Law Music Project in 2005 as a vessel for soothing and melodic musical messages. They have formed the rhythm section for various groups for over 25 years. The flow that is Shikantaza's trademark is punctuated by precise dynamic and rhythmic movements. Its music is saturated with meaning, melody, and haunting harmonies. The ensemble passionately explores the jazz canon, making familiar works uniquely their own, but also offering original compositions developed improvisationally.

Doug Miller studied classical piano with F. Ming Chang, popular and jazz piano with the late Norman Schnell (pianist for Gene Krupa), gospel piano and organ with Lillette Jenkins-Wisner, and improvisation and composition with Laurie Altman. Doug is a founding member of the jazz trio Shikantaza. When not performing, he devotes himself to musical research, composition, and production of soundtracks for independent film and video artists. His mythic musical mentors are Glenn Gould, Miles Davis, Ry Cooder, and Sun Ra. Brandon Lewin

Brandon Lewin is a founding member of Shikantaza. His light nuanced style has evolved through over 40+ years of professional performing and his spiritual pulse provides

the “centering point” of the ensembles sound. Brandon's musical family includes the late Mort Lewin, who wrote arrangements for the US Army band, and lead a jazz ensemble based in Princeton. Although Mort was a reed player, his love for Latin music inspired him to specialize in percussion. In addition to performing meditative music with Shikantaza, Brandon is a Coach of Mindfulness Meditation with ‘Ease and Lightness’.

Born in Gengenbach, in the Black Forest region of Germany, **Bernhard Geiger** took piano and organ lessons from age ten from Arthur Münzer. In the course of his classical studies he discovered Bach. At age twenty, he started playing the double bass, studying with Johannes Schädlich (Jazz) and Laura McCreery (Classical). Bernhard has played with: the Thilo Wagner Trio and Threebop (Germany), Swing Line (France), and the Eric Haltmeier Trio, Tom Hyland Trio, The Ponds Big Band, and Shikantaza (USA). He admires Charles Mingus, Bill Evans, Keith Jarrett, Thelonius Monk, and John Coltrane, among others.



South Brunswick Arts Commission

presents

The Jazz Café

For more jazz throughout the state, www.NJJazzList.com.

Herb Eckert Auditorium, Senior Center
South Brunswick Municipal Complex
540 Route 522 • Monmouth Junction
Admission \$6 as the door
No advance ticket sales
Doors open 7:30pm, all ages welcome

October 6, 2017, 8 to 10 PM • Blue Jersey Band



John Burton, Ellen Ruck and Frank Ruck

BLUE JERSEY BAND brings an eclectic mix of swing, gypsy jazz, and bluegrass to their performances. With Frank Ruck on mandolin, guitar and vocals, Ellen Ruck on guitar and vocals, and John Burton on bass guitar, they provide a lively and swinging evening of music. Their influences include: Django Reinhardt, Tony Rice, David Grisman, and Freddie Green. They have played for Musikfest, Albert Music Hall, Communiversity, Café Improv, New England Folk Festival, Swingin' Tern, Princeton Country Dancers, Pine Lakes Summer Series, ArtsQuest, Halo Pub Series, Minstrel Show, New Hope Arts Festival, Chico's House of Jazz, S. Brunswick Jazz Cafe, Viridian Gallery in NYC. Their other bands have included: Ex-Tradition, Ragman, Baroque to Bossa Nova, and Rum & Onions Band.



Future Jazz Cafés

November 3 • Radam Schwartz

**December 8 • Blues in Disguise
with Paul Plumeri & TJ Nix**

February 2 • The VooDUDES (BYOB)



South Brunswick Arts Commission
Municipal Building, POB 190
Monmouth Junction, NJ 08852

Arts Commission Events Calendar

Jazz Cafe

September 8 • Shikantaza (BYOB)

October 6 • Blue Jersey Band

**December 8 • Blues in Disguise
with Paul Plumeri & TJ Nix**

The Gallery

Geology, Meteorology, Astronomy
Through October 20, 2017

Next show: ***Home Economics
& Physical Education***

Reception Friday, October 27, 6:30 to 8PM
October 27, 2017 to January 12, 2018



Guests at August 11 reception for *Geology, Meteorology, Astronomy* enjoy the artwork, above and the light jazz accompaniment in the lobby, below.



SENIOR CENTER ARTS EVENTS

Open 8:30–4:30pm weekdays. For more information,
call 732.329.4000 ext. 7670

September 7 • 12:30pm, Movie, *King Arthur – Excalibur Rising*

September 12 • 12:15pm, Create an abstract work of art, with Art Lee.

September 12 • 12:30pm, Monet's Waterlilies, with Maurice Mahler

September 26 • 12:30pm, Movie, *Going in Style*

October 5 • 12:30pm, Movie, *Chuck*

October 10 • 12:15pm, Create works of art from ordinary things, with Art Lee

October 19 • 12:15pm, McCarter Theatre's Seniors OnStage presents Surprises & Aha Moments

October 20 • 12:30pm, Art lecture with Maurice Mahler on The Sistine Chapel

October 23 • 12:30pm, Movie, *Megan Leavey*

Class

Art Class, Mondays, 1:30-3:00pm, September 25 – November 6, 6 weeks, \$28; November 13 – December 18, \$28

This newsletter is available at the Municipal Building, Library and Senior Center. Enlargeable PDF version is available at www.sbarts.org/other-info/print-newsletter-archive/. To receive the monthly electronic newsletter, send your request to arts@sbtjn.net.

South Brunswick Arts Commission Meetings are held the 3rd Thursday monthly (second Thursday in December), in the First Floor Lounge of the Municipal Building, 6:30pm. Next meetings: **October 19** and **November 16**. To list your arts event on our website, please send your information by the 15th of the preceding month to arts@sbtjn.net.

The South Brunswick Arts Commission is committed to making its programs and facility accessible to everyone. If you have any questions about your visit please contact us at arts@sbtjn.net or leave a message at 732-329-4000 x 7635.

Visit the South Brunswick Arts Commission website:

www.SBArts.org

CAMERA CLUB - If you are interested in helping to determine the future of the South Brunswick Camera Club, please contact Jim Pickell, dotjimp@aol.com, 732.821.6196

Enlargeable version online at www.sbarts.org
and large print version available on request.